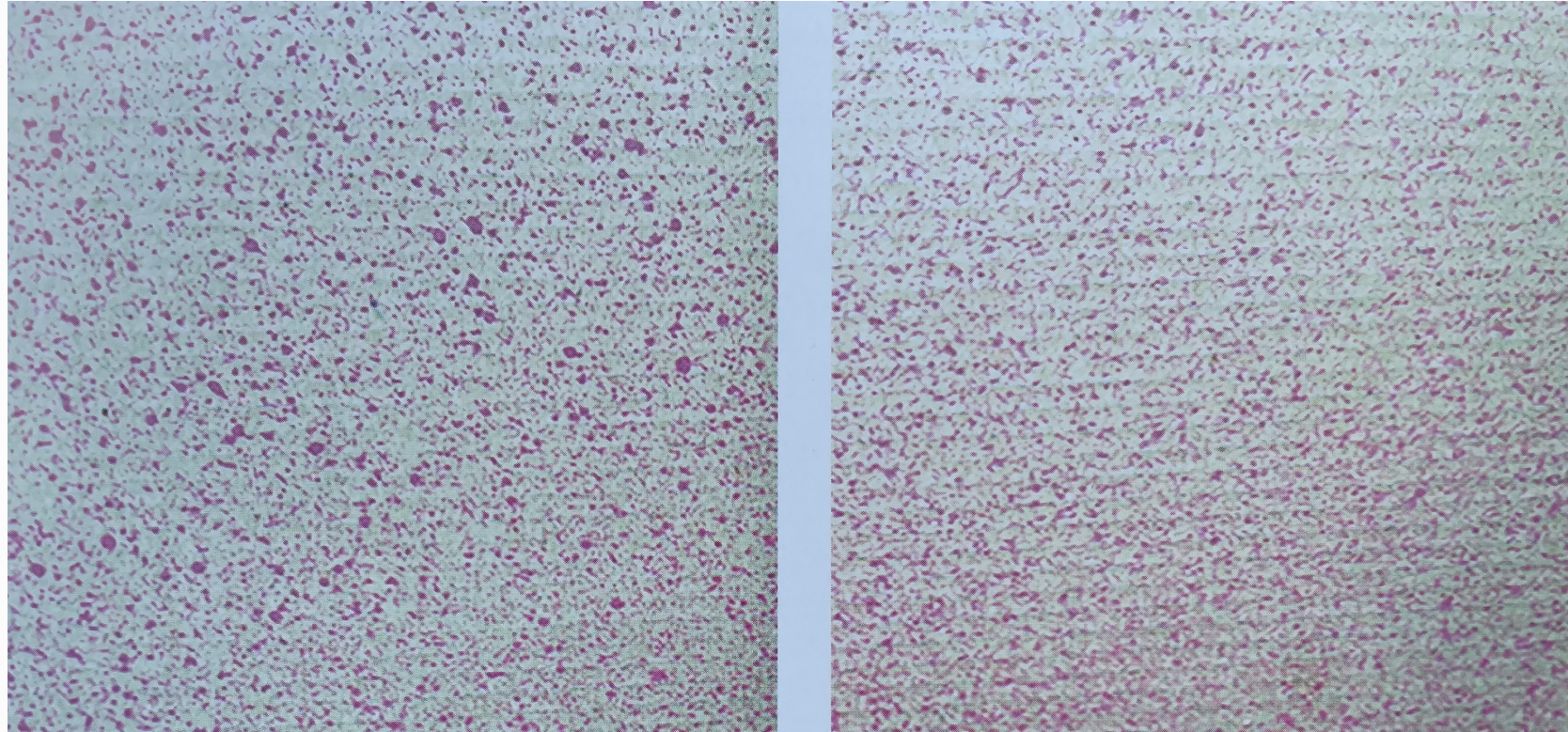




KOMBO 950 LF - COMBINATION ADJUVANT SPRAY DROPLET PATTERN TRIAL



KOMBO 950 LF
(0.5%)



Roundup CT
(2.5l/ha)

LI700 type + AMS
(0.25%) (0.8%)



Roundup CT
(2.5l/ha)

LESS SPRAY DRIFT - IMPROVED SOLUBILITY - LESS FOAMING

Please note

1. Trial conducted August 2014, red dye sprayed over cardboard sheets using ATV.
2. Boom height was 70cm, nozzles were AirMix Flat Fan 110-01, pressure 4 bar (60psi), water rate 110L/ha.

